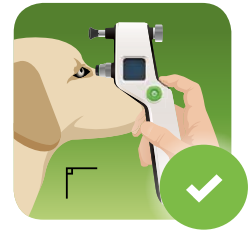
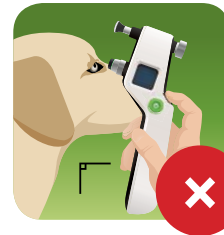
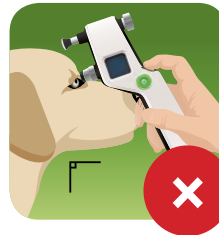
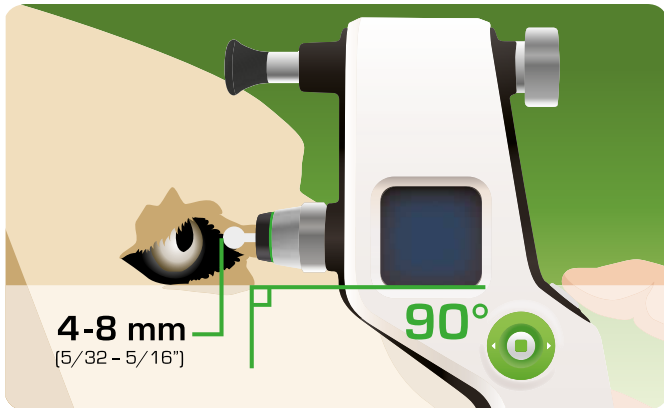
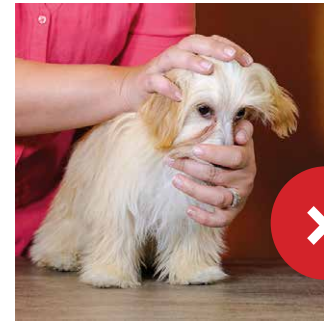


NOTIFY

Make sure the pet's head is positioned so that the eyes are **looking directly forward**, not up or down, nor right or left.

Avoid excessive restraining, as it may alter the IOP. Hold pet's head as lightly as possible; be careful not to put pressure on the neck or the eye ball. If a collar is worn; make sure it is not too tight or remove it for the measurement.



Place the tonometer near the pet's eye so that the **probe is pointing the central cornea perpendicularly in a 90 degree angle**. Allow a few seconds for the patient to adapt to the situation. This minimizes the 'fright' blinking (aka menace response).

You can steady your measuring hand eg against the pet's head or the other hand holding pet's head. Hold the tonometer still when measuring.



Always measure as close to the middle of the cornea as possible. When measuring don't pay attention to the display, but the probe position.

DOCTOR:

PHONE:

TARGET IOP:	MEASUREMENTS PER DAY:	MULTIPLE MEASUREMENTS AT TIME:
-------------	-----------------------	--------------------------------

INSTRUCTIONS: