

icare
TONOVET
Plus



QUICK
GUIDE

ENGLISH



NO ANESTHESIA
NO CALIBRATION

TURNING THE TONOMETER ON AND LOADING THE PROBE

1. Press the Select or Measure button to turn the tonometer on. Illustrations of these alternative ways of starting: *Remember to use the wrist strap*

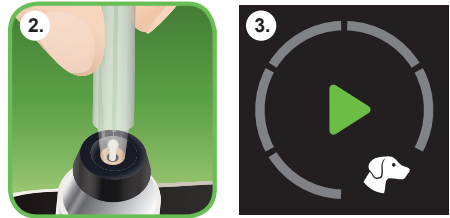


Pressing the Select button

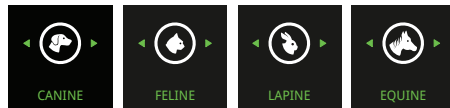


Pressing the Measure button

2. Open the probe tube by removing the cap and insert the probe into the probe base as shown in the image.
3. When the Play symbol appears on the display, the tonometer will be ready for measurements.



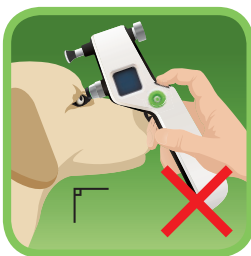
To change the setting for different species press the Select button to access the menu. Press Navigation buttons and select SETTING by pressing the Select button. Toggle the settings by Navigation buttons and select a specie setting by pressing Select button. To measure return to MEASURE by navigation buttons.



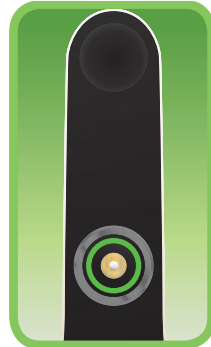
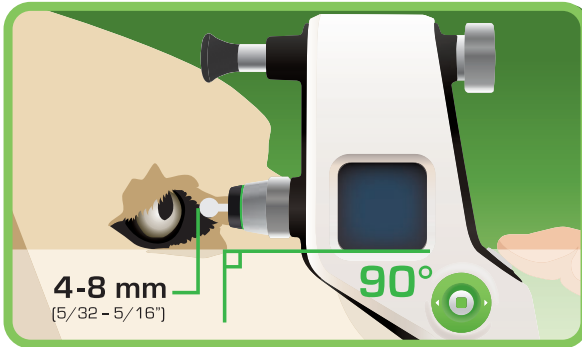
MEASUREMENT

1. Bring the tonometer near the patient's eye. (It's not necessary to look at the display during the measurement since the device gives sound signals about errors etc.)

Avoid excessive restraining, as it may alter the IOP. Patient's head should be held as lightly as possible; be careful not to put pressure on the neck or the eye ball. If a collar is worn; make sure it is not too tight or remove it for the measurement.



2. Keep the **probe horizontal and pointing perpendicularly to the center of the cornea**. the distance from the tip of the probe to the patient's cornea should be **4 - 8 mm (5/32 - 5/16 inch)**. The probe base light must be green (indicating correct measuring position).



Green probe base light indication

3. **Press the Measure button to measure IOP.** Probe will contact the eye during measurements: Press and hold the button to collect 6 measurements in a row OR press the button briefly 6 times to collect 1 measurement at the time.



ONE SHORT BEEP —

Indicates a correct single measurement.

DOUBLE BEEP — —

Indicates an incorrect single measurement. (See error messages from instruction manual).

LONG BEEP ———

Indicates that six successful measurements are done and IOP result is available on the display.

DISPLAY DURING MEASUREMENTS



Before



After the second measurement



After the sixth measurement



After the sixth measurement but with acceptable variation*

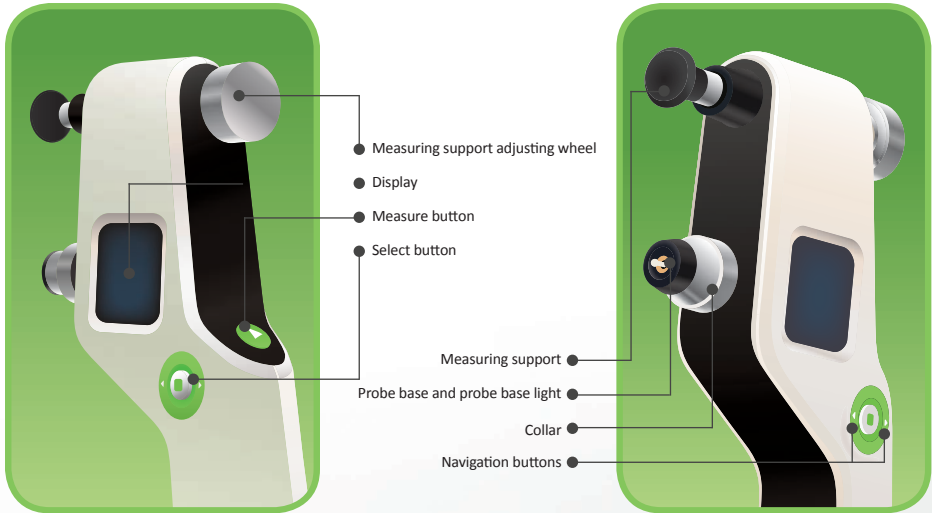


After the sixth measurement but with too much variation**

* Measurement should be repeated if the result is over 25 mmHg

** Measurement should be repeated (NOTE in very high IOPs, the fluctuation may be higher than normal)

PARTS OF THE TONOMETER



CHANGE/CLEAN THE PROBE BASE REGULARLY TO AVOID UNNECESSARY SERVICE.

CLEANING THE PROBE BASE

Replace the probe base every 12 months. Clean the probe base every 6 months. Clean or replace the probe base if the error message Clean Change is displayed. Make sure that the probe base is completely dry before using it.

- Fill the probe base cleaning container or other clean container with 70-100 % isopropyl alcohol.
- Turn the power off.
- Unscrew the probe base collar and remove the probe base by tilting the tonometer downwards.
- Insert the probe base into the probe base cleaning container or other clean container filled with 70-100% isopropyl alcohol.
- Let soak for 5-30 minutes.
- Remove the probe base from alcohol.
- Dry the probe base by blowing clean canned or compressed air into the hole in the probe base. This will additionally remove possible residual dirt.
- Insert the probe base into the tonometer.
- Screw the collar in, to lock the probe base.



Please refer to the instruction manual for more detailed instructions of changing and cleaning the probe base.

www.tonovet.com



Refer to the instruction manual for additional information.
www.tonovet.com/eifu